

# Foundation *Focus*



## *From the Heart of the Community... Philanthropy Helps Fund a New Cardiac Rehabilitation Center*

*Also Inside:*

- Q&A with Dina Tortorelli, RN, BSN, CNML
- Why I Give: A Promise Kept
- Spirit of Giving
- Our Community Cares

**Chilton Medical Center  
Foundation**



Atlantic  
Health System

# A Message From...

## The President



Last January, I joined Chilton Medical Center and the Atlantic Health System family with a shared vision for building upon Chilton's reputation for excellence and for delivering compassionate, quality care. What an exciting year it has been, as we enhanced vital services and set new goals for improving the health of our community.

Energized support from our staff, physicians and donors powered many noteworthy initiatives, including a new Cardiac and Pulmonary Rehabilitation Center that allows patients to optimize their health in a safe, convenient, state-of-the-art setting. We strengthened Chilton's leading edge cancer services with immunotherapy, a breakthrough treatment that uses the body's own immune system to destroy cancer cells, along with a uniquely comprehensive Second Opinion Program for breast cancer patients. And work has begun on the new family-focused Children's Center at Chilton which will expand our capabilities in pediatric emergency and inpatient care.

With an eye toward the future, our team also developed robust plans for the year ahead. Our agenda is topped by a \$10 million

renovation of Chilton's Intensive Care Unit, Cardiac Intensive Care Unit and third-floor Medical/Surgical Unit. The project ensures that our world-class care is matched by world-class facilities featuring private rooms, advanced technology and comforting amenities. In 2017, we'll also update the hospital's main lobby to create a serene, welcoming environment for patients and visitors, and prepare for a new electronic records system that will transform the way we retrieve, share and secure health information.

I look forward to sharing details about these and other enhancements as Chilton expands its scope of care in our community and increases access to Atlantic Health System's network of services. With your invaluable contributions, Chilton will remain on the front lines of medicine, providing innovative, personalized care to families in northern New Jersey.

Sincerely,



Stephanie Schwartz, FACHE, MA  
President, Chilton Medical Center

## The Chief Development Officer



It has been a proud year for the Chilton Medical Center Foundation, as we celebrated the impact of our donors' extraordinary generosity while taking on new and promising fundraising endeavors.

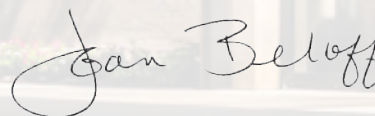
Perhaps most significantly, in 2016, hospital friends and family commemorated the official groundbreaking for the Children's

Center at Chilton, which was supported by a \$600,000 Major Gift Initiative. The one-year fund drive exceeded its goal by \$100,000, reflecting the exceptional commitment of individuals, corporations, foundations, hospital employees and other benefactors who wanted to take part in our trailblazing effort to build a facility that's uniquely devoted to kids – combining all pediatric services in a single, child-friendly space.

This successful project was followed by a focus on cardiac care, as the Foundation raised money to equip a new Cardiac

Rehabilitation Center for those recovering from heart surgery or challenged by heart disease. Once again, our community responded with unwavering benevolence. Contributions to this initiative and others were extended through donations, participation in our annual events, and planned giving, including a \$100,000 bequest from a former Kinnelon resident who capped a lifetime of small, consistent gifts with a special, lasting legacy.

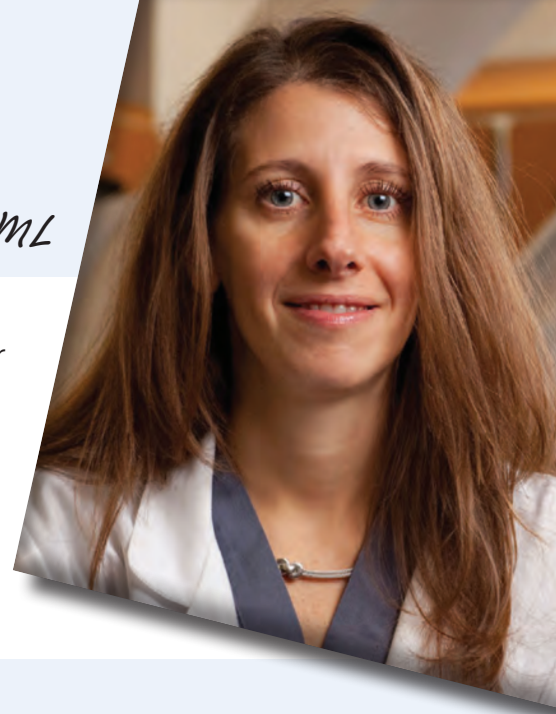
My deepest thanks to all of our loyal donors – for your kindness, compassion and dedication to Chilton. I look forward to your continued support in 2017, as the Foundation seeks funding for additional projects to enrich and expand our vast array of services. As always, every dollar we receive remains at Chilton, improving the quality of health care for residents of our community.



Joan Beloff  
Chief Development Officer

# Q&A

*with Dina Tortorelli, RN, BSN, CNML*



Dina Tortorelli, RN, BSN, CNML, serves as Manager of Cardiovascular Services for Chilton Medical Center. Since joining the Chilton family in 1999, Dina's role has evolved and grown along with the hospital – from a “floating” nurse to architect of Chilton's burgeoning Heart and Vascular Center. She's dedicated her entire career to pushing the boundaries of cardiac care and improving heart health.

## **Q. Let's put things in perspective. How common is heart disease?**

**A.** Heart disease is prevalent – around the globe and in our own community. It's the leading cause of death in the world, affecting about 86 million Americans and claiming more lives than all forms of cancer combined. Close to home, cardiovascular disease ranks among the highest health priorities for Passaic and Morris Counties. A recent community assessment identified a significant and pressing need for increased awareness, education, and wellness opportunities focused on heart health.

## **Q. Why is it so important for Chilton - a community hospital - to build a comprehensive, top notch cardiovascular program?**

**A.** People want to know that they can go to their local hospital for all of their cardiovascular needs, whether they have a history of heart disease or are simply at risk. With that in mind, Chilton offers a full continuum of diagnostic testing and therapeutic interventions combined with seamless access to advanced care. Our affiliation with Atlantic Health System gives our patients more resources and options than ever before, including heart surgery at one of the nation's best heart surgery hospitals. Chilton's patients can feel confident that they don't have to travel outside their neighborhood to find high quality cardiac services.

## **Q. Tell us about the new Cardiac Rehabilitation Center. How has it improved patient care?**

**A.** Research shows that fitness, nutrition counseling and lifestyle changes can improve heart health. So we've invested substantially in our Cardiac Rehabilitation Center, which not only offers medically supervised rehabilitation for those recovering from heart surgery but also a wellness program aimed at preventing heart disease. Last June, the facility was relocated to a bigger, modernized space equipped with brand new machines, enabling us to treat more patients while expanding our community services. The extensive renovations were partially funded by the Chilton Medical Center Foundation.

## **Q. Has Chilton introduced any new ways of diagnosing heart disease?**

**A.** Yes. We recently purchased a Cardiac CT (cardiac computed tomography), a non-invasive heart imaging technology that helps us identify coronary artery disease in patients experiencing chest pain or other cardiac symptoms. With the help of sophisticated software and the expertise of specially trained, board certified physicians, we can detect the buildup of calcium in the artery walls and see if any arteries are narrow or blocked – without surgical intervention. Cardiac CT enhances our ability to make an accurate diagnosis and evaluate the need for additional testing.

## **Q. How about advances in treatment? Any promising breakthroughs for heart patients?**

**A.** As an Atlantic Health System hospital, Chilton offers its patients the latest innovations in cardiac care. One of the most exciting advancements is transcatheter aortic valve replacement, an alternative to open heart surgery. The procedure, now available through our health network, allows physicians to repair a damaged aortic valve with a small incision instead of opening the chest wall. In fact, given its early success, clinical trials are now underway to apply the same technology to mitral valve repairs. While this progressive, minimally invasive approach is not ideal for everyone, it represents a new treatment option for those who are not candidates for surgery... and another opportunity for us to facilitate better health outcomes for patients with heart disease.

# Why I Give

## A Promise Kept

### *Pompton Plains Couple Gifts Medical Equipment*



Deborah Cochrane, RN, MS, FNP, CRNI

Lee and Patricia Cahill are big on promises. The Pompton Plains couple recently celebrated 53 years of marriage - after fulfilling a commitment to put their youngest son through college (at Yale University) and proudly supporting their beloved, ever-growing family, which includes two children, Thomas and Michael, two grandchildren, nine foster babies, and the occasional adopted pet.

Then there's that promise they made to Chilton, back in

2014, when Patricia was hospitalized for paralysis related to an underlying autoimmune disorder. During her stay, it was necessary to use the one ultrasound machine available for inserting central catheters, an intricate procedure that can be challenging and sometimes painful without superior imaging technology. And it was. Due to Patricia's deep, thin veins, it took two attempts, one in each arm by Deborah Cochrane RN, MS, FNP, CRNI to successfully complete the procedure. During the lengthy, uncomfortable procedure, Patricia told Deborah that if she could get the catheters inserted she would buy Chilton a new machine. The couple later learned that Chilton Medical Center was in need of that additional ultrasound machine for inserting central catheters. So the Cahills offered to buy one. This extraordinary act of generosity was granted without reservation, personal benefit, or knowing how much the equipment cost. Their sole focus was on creating a better hospital experience for future patients.

"When Chilton asked how much we'd like to contribute toward the new device, we insisted on paying the whole thing," asserted Patricia. Not even a \$20,000 price tag would change their minds. "We wanted to acknowledge the wonderful care we received at Chilton while responding to a critical need," noted Lee. "Our only hope was that our donation would benefit someone else."

Indeed it has.

The acquired, state-of-the-art technology helps Chilton clinicians implant a thin tube, called a PICC (peripherally inserted central catheter), for extended intravenous (IV) therapy. Highly detailed pictures captured via ultrasound enable therapists to precisely visualize and access a vein in the patient's upper arm. The imaging is more accurate than an x-ray and does not expose the patient to any radiation.

"The generosity of the Cahill family has provided hundreds of Chilton patients with reliable, long-lasting IV access while avoiding unnecessary poking, prodding and pain," explained Cochrane. "With this gift, our nurses can follow best practices and provide our patients with leading edge care."

Although the \$20,000 donation represents the couple's first major gift to Chilton, the Bronx natives have always lived charitably – through word and deed. As a teenager, Patricia volunteered at a local hospital and later donated her talents to her church and the American Red Cross, while Lee served his country in the U.S. Armed Forces and currently serves his congregation as a Eucharistic Minister and lector. Together the couple has embraced a myriad of worthy causes, from providing aid to impoverished communities around the world to offering a temporary, loving home to nine foster babies in need.

Looking back upon their upbringing along with their 45 years in Pompton Plains, both Lee and Patricia are grateful for their abundance – an abundance that is not defined by all they have, but all they give. "Many people say that whatever you give, you get back three times over," stated Lee. "It's true. But philanthropy is about much more than writing checks. It's about getting involved – and staying involved – in your community, in your hospital, in the causes that are important to you."

Since this first gift in 2014, the Cahills have funded an array of Chilton projects, including a \$10,000 gift to purchase new bassinets for the Special Care Nursery in Chilton's Mother Baby Center.

"I've never really broken a promise, so I'm glad we could honor our promise to Chilton," Patricia added. "We look forward to making many more in the future."

# Gift of Note

## A Champion for Cancer Patients

### March Associates Funds Nurse Navigator at Chilton Cancer Center

Last March, March Associates Construction, Inc. of Wayne donated \$75,000 toward the funding of a nurse navigator at Chilton's Cancer Center. It was a milestone occasion – for both Chilton and its generous benefactor – because this contribution not only represents seed money for a new hospital service but the company's largest charitable gift to date. For prostate cancer survivor Louis D. March, Jr., President of March Associates, and the vast majority of his employees, the gift represents a genuine, personal commitment to helping cancer patients in their community.

"There's nothing in the world like being told that you have cancer," he asserted. "I'll never forget the day – November 6, 2014, two months shy of my 45th birthday. I was sitting in my office when I got the news, and couldn't believe it. I was overwhelmed."

It was that sense of shock and uncertainty following his own diagnosis and throughout his cancer journey that inspired March Associates' gift to Chilton, which is aimed at easing the emotional burden of cancer. The donation enabled Chilton's Cancer Center to hire a nurse navigator, an oncology specialist who guides patients and their families through the cancer experience. "I serve as an advocate, educator and champion for cancer patients, offering personalized support from the point of diagnosis through treatment, recovery and beyond," explained Lori Manning, RN, BSN, OCN, Oncology Nurse Coordinator/Patient Navigator, Chilton Cancer Center.

Among her many responsibilities, the nurse navigator helps newly diagnosed patients understand their illness and treatments while empowering them to make informed health care decisions. Importantly, she also provides a gateway to health services – coordinating tests and medical appointments, assisting with insurance issues and potential barriers to care (such as transportation), connecting individuals to hospital and community resources, and



Louis D. March Jr., President, March Associates Construction, Inc.; Joan Beloff, Chief Development Officer, Chilton Medical Center Foundation; Dr. Michael Kane, Medical Director, Community Oncology, Atlantic Health System; Bryan Murray, Marketing Director, March Associates Construction, Inc.; and Debbie Aiosa, Administrative Assistant, March Associates Construction, Inc.

enhancing communication between patients and their health care team.

"This can be a confusing, stressful time for cancer patients and their loved ones," she noted. "Just knowing that someone is available to help can provide comfort, reassurance and better outcomes."

Lou March experienced those benefits firsthand during his battle with prostate cancer. "The nurse navigator guided me through treatment options and took my mind off insurance and paperwork so I could focus on the most important things... my wife, my kids, and my recovery," he said.

Lou has been cancer-free for two years – an anniversary he doesn't take for granted. But rather than celebrating with a party or special trip, this grateful cancer survivor honors his good health and fortune by paying it forward.

As longtime residents of Wayne, Lou and his family business uphold a tradition of giving to the community. The organization supports many local charities, such as the Boys Club, first aid squads, and various health related causes. Its recent donation to Chilton's Cancer Center was particularly meaningful, as it reflected the company's most ambitious fundraising effort – and a success that was not realized through one corporate check but through the hearts and contributions of its workforce.

"Ninety percent of my employees donated to this fund drive, because most of us have been touched by cancer," he stated. "We have a tremendous cancer program right here in our backyard. We supported the new position at Chilton so it can continue to grow... and so no one has to go through cancer alone."

"If our gift makes it a little easier for even one family," he added, "we've done a great thing."

# Spirit of Giving

## Former Kinnelon Resident Bequeaths \$100,000 to Chilton

Lois Hargreaves



Christmas was a special time of year for the late Lois Hargreaves. She and her husband, Charlie, would often hop in the car and journey to Hockessin, Delaware, where they celebrated the holiday with their beloved family while honoring the spirit of giving. Like most people, Lois enjoyed the season's sparkle and festivities, but there was something that she cherished even more: sharing her blessings with others. Her charitable nature shined brightly at Christmas – and every day after. In fact, Lois ensured that her generosity would continue touching lives for decades to come.

Lois Hargreaves passed away on July 15, 2016 at 90 years of age, but she leaves behind an enduring legacy through her benevolence – including a \$100,000 bequest to Chilton Medical Center, her longtime community hospital.

The gift came as a complete, albeit delightful surprise to Chilton. Throughout her 24 years in Kinnelon, Lois frequented the hospital only a handful of times. But that did not hinder her desire to contribute to the health and well-being of her hometown – even after she moved south to escape the harsh winters.

According to Chilton's records, Lois had been giving to the hospital since 2009. Her donations were consistent, culminating with the \$100,000 bequest. As stipulated in her last wishes, \$50,000 was bequeathed in memory of her parents, Clara Brown and Frank Lookhoff, and her husband's parents, James Harold and Vera Hargreaves, while an additional \$50,000 pays homage to Chilton's founder, the late Dr. Forrest S. Chilton II, who delivered Lois's only child, Carol Hargreaves Maclary.

At the time of her death, Lois had no surviving family with the exception of her son-in-law, Kenneth Maclary, whom she loved

dearly. She lost her daughter to breast cancer in 2006 and her husband in 2008, soon after their 62nd wedding anniversary. Nevertheless, Lois lived her final years the same way as she lived those that preceded them – with strength, compassion, and an open heart.

Interestingly, both Lois and her husband were raised in the Morris County area – as only children – and then completed their own family with their beautiful daughter, Carol, who was born at Chilton. Although Carol eventually settled in Delaware, Kenneth fondly recalls how the families lived in close proximity for some time, probably within a few square miles of one another, and exhibited strong ties to their community.

"Lois liked to have a hand in things," he said, "particularly when it came to the school system." She volunteered in the schools before working for the Kinnelon Borough Board of Education up until her retirement in 1988, following 22 years of service. That passion was passed along to her daughter, who also dedicated her life's work to education – as a teacher, mentor and advocate for the Miss Delaware Scholarship Organization.

Beyond her profession, Lois enjoyed gardening, bowling, playing a few rounds of Bingo, and traveling with her family. Her greatest pleasures, however, were probably linked to her charitable endeavors, which remained at the forefront of her life.

"Lois was always philanthropic, especially during the holidays," asserted Kenneth, who remembered Lois writing check after check to a plethora of deserving causes, from the Girl Scouts of America to St. Jude Children's Research Hospital. "She was very generous... donating \$100 here, \$200 there... she just kept giving."

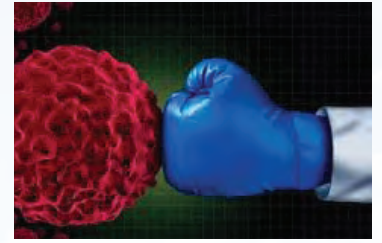
As the ultimate display of kindness, Lois Hargreaves bequeathed the majority of her estate to charity. Along with her gift to Chilton, she established scholarships, funded educational programs, and donated money to organizations that were meaningful to her and her family.

Added Kenneth, "Lois was a good-hearted person who loved her daughter, loved her family, loved her community... and loved to make a difference."

# What's New at Chilton?

## A New Way to Knock Out Cancer

Representing a major breakthrough in the fight against cancer, researchers at Atlantic Health System have helped introduce new drugs that use the body's own immune system to destroy cancer cells. This innovative approach, called immunotherapy, is different than chemotherapy and radiation because it doesn't kill cancer directly. Instead, the medication taps into a patient's natural defense system – helping the body recognize cancer cells and then attack them. Because immunotherapy supports the immune system over time, patients might not need additional intervention if similar cancer cells return. Furthermore, immunotherapy rarely causes side effects associated with conventional treatment, such as nausea, hair loss and fatigue.



Chilton's cancer patients currently have access to immunotherapy for treating melanoma and cancers of the head and neck, mouth, throat, lung and kidney. Research continues to discover more drugs and applications for this exciting advance.



## A Higher Standard for Intensive Care

Chilton has partnered with Advanced ICU Care® to launch a telemedicine program that elevates the level of critical care available to our patients. With the assistance of computer technology and video communication, highly skilled intensivists (doctors trained in critical care) and critical care nurses work collaboratively with Chilton's bedside team to continuously monitor each patient's condition. These specialists provide an added layer of expertise for managing a patient's care when his or her bedside physician cannot be present, including evenings and weekends. The new telemedicine program sets a new standard of excellence for around-the-clock intensive care.

## Breast Cancer Second Opinion Program

Atlantic Health System has launched a Breast Cancer Second Opinion Program aimed at educating and empowering women throughout their cancer journey. Designed for newly diagnosed breast cancer patients, as well as those facing a recurrence or another phase of treatment, this unique service brings together an entire team of specialists during one convenient visit. The appointment includes a private evaluation with one or more physicians followed by a group consultation that allows patients and family members to speak with several experts all at once – meaning fewer medical visits and more information to make the best health care decisions.



## Top Marks for Chilton

Chilton Medical Center is dedicated to providing exceptional quality care. The Foundation is proud to share some of the hospital's most recent awards and accomplishments:

*U.S. News & World Report* ranks hospital performance related to a handful of common adult procedures and conditions. Chilton Medical Center was rated "high-performing" in two areas: Chronic Obstructive Pulmonary Disease (COPD) and Heart Failure.



To learn more about Chilton's health care programs and services, visit [atlantichhealth.org/chilton](http://atlantichhealth.org/chilton) or call 1-800-247-9580 for referral to a Chilton physician.

# New Board Member Spotlight



## **Brian F. Donnelly, AAMS®, Vice President – Private Client Group Manhattan Ridge Advisors**

Brian F. Donnelly began his financial services career in 2001. He specializes in providing retirement income counseling to academic professionals, doctors and dentists. Brian works with individuals during the accumulation phase of pre-retirement savings and throughout the distribution phase of income and legacy planning. He guides his clients and provides them the professional resources to make the most appropriate financial planning decisions based on their individual needs and goals. Brian has provided social security and retirement planning seminars at Rutgers University, New Jersey Medical School and Chilton Medical Center.

Brian's passions include the charitable work he does within the community with organizations such as Covenant House and the Ronald McDonald House. Brian is on the Board of Directors of Circle of Life Children's Center and on the Board of the Chilton Foundation. Brian has also been the title sponsor for the University Hospital Annual Golf Outing which raised funds to refurbish patient waiting rooms.



## **Brian T. Markley, Partner– Cahill Gordon & Reindel LLP**

Brian T. Markley is a member of Cahill's litigation practice group. He also serves as the firm's Hiring Partner and is co-chair of the Ethics Committee.

Brian represents companies, boards of directors and special committees in connection with internal investigations and inquiries by the DOJ, SEC and other governmental agencies and self-regulatory organizations. Brian frequently investigates potential violations of the Foreign Corrupt Practices Act ("FCPA") and other anti-bribery and anti-corruption ("ABAC") laws in countries around the world. Brian also advises companies in connection with ABAC diligence for mergers, acquisitions and other investments in jurisdictions with high corruption risk and works with clients to implement effective post-acquisition compliance programs.



## **James Messina, Chief Operating Officer/General Manager – Preakness Hills Country Club**

As Chief Operating Officer responsible for all club operations, James is directly responsible for exceeding the expectations of a very discerning membership. James is a graduate of the University of Delaware earning a bachelor's degree in Human Services, Education and Public Policy with a concentration in Hotel, Restaurant and Institutional Management and a minor in Business Administration as well as achieving a fellowship with Aramark.

An active member of the Club Managers Association of America (CMAA), James is currently pursuing the distinction of certified club manager. James is also active in the New Jersey Club Managers Association (NJCMA) as Chair of the Communications Committee and serves on the Career Services Committee. James sits on the New Jersey Club Foundation Board which is the charitable arm of the NJCMA. He is enthusiastically involved in "Team Cam" which is a charity established to raise awareness and funds for the Cystic Fibrosis Foundation.

## **MAKING AN IMPACT TODAY AND TOMORROW**

Chilton Medical Center Foundation kicked off a special initiative this past year as a way to build its *Chilton Legacy Circle*. The Legacy Circle recognizes individuals who support the hospital's future through estate planning, including bequests, gifts of life insurance and other deferred gifts.

Thanks to the generosity of an anonymous donor, Chilton launched a "Legacy Match Challenge" – when community members included a legacy gift to Chilton Medical Center Foundation in their estate plans, the donor made a cash gift of \$5,000, up to \$50,000. The Challenge was a success, ensuring that Chilton has the resources it needs to continue delivering expert care well into the future while the cash match provided vital support for today.



## **CHILTON LEGACY CIRCLE MEMBERS**

Mr. and Mrs. Charles H. Adler  
Mr. and Mrs. Rocco A. Barbieri  
Mrs. Ruth S. Caradine  
Mr. and Mrs. Donald Chamberlain  
Dr. and Mrs. Barry A. Cohen  
Dr. and Mrs. Valentin N. Dolorico  
Mr. Brian Donnelly and  
Ms. Jamie Berman  
Mr. and Mrs. James J. Doyle  
Mrs. Barbara P. Duke  
Mr. and Mrs. Ralph Fericola

Ms. Phyllis Gallucci and  
Mr. Robert Thelen  
Ms. Lynn Garofalo  
Mr. and Mrs. Henry P. Gautschy  
Mr. and Mrs. Karl Grimmelmann  
Mr. and Mrs. Joseph A. Hallock  
Mr. and Mrs. William Kelly  
Dr. and Mrs. Kwon Kim  
Mr. Robert S. Krause  
Mr. Spyros Lenas  
Mr. and Mrs. Louis B. Lombardi

Mr. and Mrs. Harry Neinstedt  
Mrs. Gail Ogando  
Mrs. Mary Peters  
Dr. and Mrs. Oscar Reicher  
Mrs. Geneva Marie Ricci  
Mr. Mario R. Rosellini, Jr.  
Ms. Ann K. Russell  
Ms. Sinikka Sarro  
Mrs. Evelyn Senaldi  
Dr. Allen Shalit  
Mr. Brad Shalit

Ms. Janet S. Shapiro  
Dr. Hervey and Mrs. Carol Sicherman  
Mrs. Ruth E. Spellman  
Mr. Kenneth B. Stride  
Dr. Abhay K. Suda and Dr. Anjali Suda  
Mr. and Mrs. Vincent Thompson  
Mrs. Anne Vogel  
Mr. and Mrs. David Washburn  
Ms. Isobel Wayrick  
Mr. and Mrs. Walter W. White  
Dr. Deborah Zastocki and  
Mr. Christopher Tighe



# Our Community Cares

## Auxiliary Helps Improve Cancer Care at Chilton

The Chilton Auxiliary continues its longstanding commitment to the hospital by donating another \$25,000 to Chilton's Breast Center and Cancer Center. Money was procured through the group's year-long fundraising efforts including their signature events, the Queen's Tea and Barn Theatre Night. The Auxiliary has been one of Chilton's largest donors and has helped the hospital fund many of its high priority initiatives.

"Our members are always very enthusiastic and compassionate about helping the people in our Chilton community. I'm very proud to be a part of this wonderful group of ladies," says MaryAnn Morgan, Auxiliary Co-President.



Fran Maletsky, Treasurer, Chilton Medical Center Auxiliary; Stephanie Schwartz, President, Chilton Medical Center.

## Painting with a Purpose

Thanks to a generous donation from the Anil & Kumud Bansal Foundation, the **Artist in Residence Program** came to Chilton as part of an overall Healing Arts initiative within Atlantic Health System. Through this special endeavor, patients, staff, visitors, and community members joined local artist Dan Fenelon in creating a mural for the hospital cafeteria. The artist designed an original mural unique to Chilton and then worked on-site with staff to bring the piece to life. The completed mural, which was unveiled at a ceremony on October 6, brings visual interest to the high-traffic space and provides a distraction, which can be very calming for both patients and staff in a medical environment.



**Pictured left to right:** Deborah Douek, MS Ed, LCAT, ATR-BC, CCLS Coordinator, Creative Arts Therapies, Board Certified Art Therapist/Certified Child Life Specialist; Anil Bansal, Anil & Kumud Bansal Foundation; Maria Lupo, MFA, MA, ATR, Manager Healing Arts, Registered Art Therapist; Dan Fenelon, Artist in Residence; Timothy Hicks, Director of Operations, Chilton Medical Center.



## HOGS for Hearts



On Saturday, June 18, the Garden State Harley-Davidson Dealership of Morris Plains and Garden State Harley Owners Group, "HOGS," hosted a special motorcycle run to benefit Cardiac Rehabilitation at Chilton. Dozens of bikers took a scenic ride throughout North Jersey, and up to Emerald Point in Greenwood Lake on a beautiful summer day. This new event ultimately raised over \$1,300 in support of the hospital.

# Our Community Cares



**Pictured left to right:** Andy Jones, Senior Vice President, Boiling Springs Savings Bank; Dr. Javier Lugo, Medical Director, Chilton Pediatric Clinic; Ken Grimbilas, Chairman of the Board, Boiling Springs Savings Bank.

## Banking On Access to Care

Our longtime partner, Boiling Springs Bank, continues to provide outstanding support of Chilton's Pediatric Clinic, a full-service health clinic that provides medical care for the community, regardless of insurance status or the ability to pay.

Located one mile from the main hospital in our Atlantic Rehabilitation building at 242 West Parkway, the Clinic offers high quality, primary pediatric and medical care to patients while producing measurable, long-term improvements in healthy behaviors, healthy outcomes and better quality of life. Last year, the Clinic provided care for over 2,500 patients from Chilton's service area of Morris, Essex, Sussex, Passaic and Bergen counties.

## Women With a Vision

The Women's Vision for Health Care Council underwent its inaugural year as a newly organized female-led philanthropic group for the hospital. Each member of the Council has committed to a two year gift of \$1,000 per year, which supports a health initiative selected by the group.

With 15 members in the Council, the first-ever gift of \$15,000 was awarded to the new Cardiac Rehabilitation Center. In September, the funds were used to purchase exercise equipment that is instrumental in a patient's rehabilitation journey.

As a regional health care leader, it is important for Chilton Medical Center to inform, empower and support women who are the primary health care decision makers for families, giving them the necessary tools to care for themselves and their loved ones. The Women's Vision for Health Care Council's objective is to give women a voice to help shape how health care is delivered to families in our community, as we aim to raise awareness and inspire community philanthropy that benefits the patients at Chilton Medical Center.

If you are interested in joining the 2017 Council, please contact the Foundation Office at 973-831-5165.

## Get Your Pink On

Two 5th grade boys, Aaron Goldberg and Raymond Goetz, held a breast cancer awareness kickball game and bake sale at Hillview Elementary School in Pompton Plains last November. In 2013, Aaron's brother, Jake, held a similar fundraiser for breast cancer awareness in support of his mother Dawn, who was battling the disease. Wanting to follow in his brother's footsteps, Aaron and his friend Raymond garnered the support of the school principal, teachers and the Hillview Home and School Association to organize a great day and raise \$300 for The Breast Center at Chilton Medical Center. The boys hope their donation will make a big difference for someone battling breast cancer.



**Pictured left to right, standing:** Christine Dorenbusch, Cardiac Rehab Exercise Physiologist; Dina Tortorelli, RN, BSN, RCIS, CNML, Manager, Cardiovascular Services; Stephanie Schwartz, President, Chilton Medical Center; Veronica Sager; Alma Newton; Willa Everson; Joan Beloff, Chief Development Officer, Chilton Medical Center Foundation; Will Neate, Director, Cardiovascular Services; **Pictured left to right, seated:** Bonnie Holmes; Barbara Cook; Nancy Grimbilas; Allyssa Tzavlakis



Raymond Goetz and Aaron Goldberg

## Loves To Care Campaign

Members of Wayne Subaru and The Leukemia & Lymphoma Society (New Jersey Chapter) recently visited the Cancer Center at Chilton Medical Center to deliver 160 blankets for patients undergoing cancer treatment. Each beautiful blanket is individually packaged and includes a handwritten note of encouragement from a local Wayne Subaru customer. The donation is part of Subaru's national **Loves to Care Campaign**, which aims to spread hope, love and warmth to cancer patients through small gestures. The Leukemia & Lymphoma Society and Subaru will donate more than 30,000 blankets and messages of hope, written by Subaru customers, to patients across the country.



The group photo includes: Charles Moltane and Robert Lesko of Wayne Subaru, Inc., along with Desli DeMarsico of The Leukemia & Lymphoma Society - New Jersey Chapter, who recently delivered 160 blankets to Mary Fassnacht and Sandy Leo, RN of Social Services at the Cancer Center of Chilton Medical Center.



Pictured left to right: Mary Gray, Manager of Special Events and Stewardship; Student Council Officer, Megan Hogan; Advisor David Gerold; Student Council Officers Hana Salvacion, Melinda MacArthur and Colten Prentzel.

## Kids Helping Chilton

The West Milford High School Student Council started a fundraiser for **Kids Helping Chilton** during the 2015 - 2016 school year. Led by Advisor David Gerold and student officers Matthew Ventrella, Emily Perry and Megan Hogan, funds were collected at school athletic events including a simple "pass the bucket" effort which eventually added up to \$500 in donations. "**Kids Helping Chilton** is a great cause and the West Milford Student Council hopes to be able to continue its support of such a worthy cause," says Gerold.

## Building Opportunities for Better Bones

Investors Foundation, The Allergan Foundation and The Hyde and Watson Foundation each awarded \$5,000 to Chilton Medical Center's Community Outreach Department. Funding was designated towards the purchase of new ultrasound bone sonometers to continue offering vital, low-cost osteoporosis screenings to women in our community. Through this important screening program, Chilton Medical Center seeks to increase awareness about the risk of osteoporosis and fracture, teach prevention strategies and encourage medical diagnosis and treatment where necessary.



Pictured left to right: Nancy Iacobucci, Vice President, Market Manager, Investors Bank; Michele McGrogan, BS, CHES, Coordinator, Community Outreach; Ebru Kuscan-Aguirre, Personal Banker, Clifton Branch.

# Our Community Cares



**Pictured left to right:** Laura Ann Kelly, Partner, Donnelly Minter & Kelly, LLC; Terri Roth Reicher, JD LLM, Immediate Past President Marie Garibaldi ADR Inn of Court Charter Member National Association of Distinguished Neutral; Dr. Marjorie Steinfeld, Clinical Psychologist; Christine J. Quinn, CPA; Lori S. Rabinowitz Senior Vice President, Private Wealth Advisor The Christensen Reynolds Group - Morgan Stanley Private Wealth Management.

## Toast to Your Financial Well-Being

This past October, members of Chilton's Professional Advisory Council conducted a women-only *"Toast to Your Financial Well-Being"* seminar, offered for free to the community. This unique session helped answer questions related to financial planning, record-keeping, advance directives and Practitioner Orders for Life Sustaining Treatment (POLST), caregiving, planned giving and the stress of dealing with finances.

## Paint the Towns Pink

2016 marked the 8th annual Paint the Towns Pink campaign to benefit The Breast Center at Chilton. Sixteen local establishments participated as sponsors this year, and with their support, \$12,000 was donated to The Breast Center. Several other local businesses hosted fundraising initiatives that brought in another \$12,000 through their efforts.



Diana Krasco and Brenda Balbuena of Pompton Queen Diner

### 2016 EVENT PARTICIPANTS

- Avenue Haircutters, Pompton Lakes
- Boniello's Restaurant, Riverdale
- David Ezra Salon & Spa, Wayne
- Earthly Bliss Yoga Studio, Pompton Plains
- Frank's Pizza, Oakland
- Green Life Market, Butler
- Moe's Southwest Grill, Pompton Plains
- Purple Lily Art Studio, Teaneck
- Rhino Studio 237, Pompton Lakes
- River of Beer, Bloomingdale
- Spa 23, Pompton Plains
- Spuntino Wine Bar & Italian Tapas, Clifton
- T-Bowl II, Wayne
- Thatcher McGhee's, Pompton Lakes
- Wayne Valley High School Soccer and Volleyball Booster Clubs
- Wendy's, Butler
- Wendy's, Pompton Lakes
- Wendy's, Hamburg Turnpike, Wayne
- Wendy's, Route 23, Wayne
- Wendy's, Route 46, Wayne
- Wendy's, Willowbrook, Wayne

## 2016 SPONSORS

**Gold Sponsor**  
Pompton Queen Diner

### Pink Sponsors

A&A Fine Foods, Lincoln Park  
Ameti's Gourmet Pizza, Pequannock  
Amore of Wayne, Wayne  
Gary's Wine & Marketplace, Wayne  
Good Food Café, Chilton Medical Center  
Grasshopper Too Bar & Restaurant, Wayne  
High SocieTea House, Wayne  
Hunziker, Jones & Sweeney, PA, Wayne  
Laurie's Homemade Candies, Wayne  
Monica's Italian Restaurant, Pompton Lakes  
Pizza One, Haskell  
Positano Restaurant & Pizzeria, Wayne  
ShamRock School of Music, Pompton Plains  
Sunset Pub & Grill, Lincoln Park  
Viaggio Ristorante, Wayne

# A Year of Events!

The Foundation had a banner year for all three signature events: The Wine Event, Golf Classic and Annual Chilton Gala. Over \$750,000 was raised to support hospital initiatives, the most the Foundation has ever grossed through event fundraising. Thank you to all our donors, volunteers and event attendees for your ongoing support and commitment to the hospital!



Guests taking a “walk” through the vineyards and history of France, from Champagne to Provence, during our VIP Wine Session at the 2016 Wine Event.

## *Chilton Wine Event*

The Chilton Medical Center Foundation held its annual Wine Event at Preakness Hills Country Club in Wayne on April 15, 2016. With nearly 350 attendees, the event grossed over \$125,000 to support the medical center’s initiative to further enhance the state-of-the-art care and service available to the Chilton community. Special VIP Wine and VIP Scotch sessions were packed with guests eager to learn more about their drink of choice.



Lee Solomon, Mark Rosen, John Marozzi and Bob Kantor.

## *Golf Classic*

It was a wonderful day on the links at the 2016 Chilton Medical Center Foundation Golf Classic. Over 160 golfers were able to join us at Preakness Hills Country Club and the Foundation exceeded its fundraising goal, with over \$200,000 raised for the hospital. Golfers participated in morning and afternoon tee times with an 18-hole scramble, followed by a lavish cocktail reception and games during our Closing Celebration and Awards Ceremony. Thank you to all of our 2016 event sponsors and golfers.

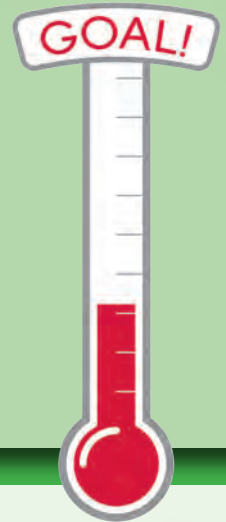


Foundation Chief Development Officer Joan Beloff, 2016 Gala Corporate Honorees Marie Inserra and Lawrence Inserra, Jr., Chilton President Stephanie Schwartz.

## *Annual Chilton Gala*

The Foundation Office is proud to announce another record-breaking year for our Annual Gala! Chilton’s 2016 “Wish Upon A Star” Gala raised over \$420,000 with 475 guests in attendance on Saturday, November 5 at The Venetian in Garfield. Our 2016 Individual Honoree, George Wolfson, has been a devoted Chilton Foundation board member, as well as the chair of both our wine and golf events for many years. Wolfson’s leadership helps to ensure that hundreds of thousands of dollars are raised for the hospital each year, and our hospital continues to thrive thanks to his dedication. Our Corporate Honoree, Inserra Supermarkets, Inc., has been a loyal, dedicated community hospital supporter for years. Inserra’s ongoing commitment to Chilton illustrates the importance of giving back to those in our immediate area, and we are grateful to have such a wonderful corporation with strong values standing behind our local hospital.

# 2016 ANNUAL FUND CAMPAIGN: BE THE DIFFERENCE!



The Annual Fund supports the most urgent needs of Chilton Medical Center today, including a wide-range of hospital operations, clinical education and direct patient care services. This year, the Foundation raised significant dollars for our “Be The Difference” Annual Fund Campaign through several initiatives:

## President’s Club

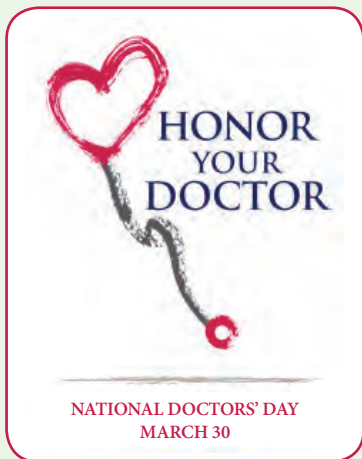
As a President’s Club donor to Chilton Medical Center Foundation’s Annual Fund, individuals who give \$1,000 or more are part of a special group of community members who have committed to supporting the hospital at an exemplary level. This important Club is recognized for making Chilton a priority in its philanthropic giving while inspiring others to make leadership gifts. Members are invited to an annual reception hosted by Chilton President Stephanie Schwartz to thank them for their generous donation.



Stephanie Schwartz,  
President, Chilton Medical Center



Members at the 2016 President’s  
Club Reception.



## Doctors’ Day

This past March, patients, colleagues and community members recognized our doctors once again for their selfless work, compassion and sacrifice during annual Doctors’ Day. Many honored our doctors with tribute gifts to Chilton Medical Center Foundation and a handwritten note of thanks. At a special luncheon, these notes, along with unique “Gift of Gratitude” pins, were presented to those doctors who received donations in their name.

## Volunteer Campaign

Chilton Medical Center’s volunteers are integral ambassadors of the hospital, touching many peoples’ lives through their dedication and volunteerism. This year’s Annual Fund initiative included the very first Volunteer Campaign where over 150 volunteers were invited to donate to a project that hit close to home: upgrades to the Chilton Medical Center lobby. We are grateful to our volunteers whose generous donations will go directly toward the lobby improvement project slated for 2017.



## Employee Giving Campaign

Every year, our employees reinforce their commitment to Chilton Medical Center by lending their financial support to our Employee Giving Campaign. This year was no exception. Raising over \$30,000, the Campaign helped secure funds to renovate the Employee Cafeteria Patio. Past employee donations raised the initial funds to build the existing patio. Now this year's effort will allow us to make additional upgrades to the welcoming space, which is enjoyed by staff and visitors alike.

"We greatly appreciate everyone's support and contributions to the 2016 Employee Campaign," says Employee Campaign Chair Timothy Hicks, Director of Operations for Chilton Medical Center.

Employee giving is one way the hospital successfully raises funds from the community, and this strong show of internal support inspired others to contribute to our Foundation. Employees have the option of donating to the designated annual project or to the department of their choice.



## Our Corporate and Foundation Partners

We continue to be very grateful for the generous grants from our Corporate and Foundation Partners. Without their support, several programs and projects at Chilton Medical Center would not exist. This year's grants funded a wide range of needs, from Creative Arts Therapy in the Pediatric Emergency Department and specialized equipment in the new Cardiac Rehabilitation Center to the purchase of a bone sonometer for our Community Outreach department and nursing education.

## Children's Center Breaks Ground

Donors, community members, and Chilton's pediatric staff energetically assembled in November to kick-off the construction of The Children's Center with an official "Wall Breaking" ceremony. This special event also celebrated the closing of our successful Major Gift Initiative which raised over \$600,000 for the project.



"We are so thrilled to see the fruits of our labor have impact," says Amy Hershman, Major Gift Chair and Foundation Trustee. "Not only will the community now have the benefit of this Children's Center which will offer state-of-the-art pediatric care, but our pediatricians who have built this program from the ground up will finally get the space they deserve."



The Children's Center, which currently sees 35-40 children per day and 15,000 annually, will be a 4,500 square foot facility combining emergency and inpatient care in one location within the hospital. When completed, it will be the only one of its kind in the region.

# 2016 Honor Roll

---

## **Chairman**

Mr. and Mrs. Stephen P. Holmes

## **Trustee**

Mr. and Mrs. Robert Andersen  
The George Link, Jr. Foundation  
Mr. and Mrs. David Washburn

## **Leadership**

Chilton Medical Center Auxiliary  
March Associates  
Construction, Inc.  
TeamHealth

## **Pacesetter**

Alsan Realty Company LP  
Boiling Springs Savings Bank  
Cardiac Associates of North  
Jersey, PA  
The Ralph M.  
Cestone Foundation  
Mr. and Mrs. Emanuel Reiser  
Mr. and Mrs. William L. Strauss  
Mr. and Mrs. Edward Tremko  
Wallerstein Fnd. for Geriatric  
Life Improvement, Inc.

## **Visionary**

Mr. and Mrs. Lee T. Cahill  
enCourage Kids Foundation

## **Builder**

Mr. and Mrs. Charles H. Adler  
The Allergan Foundation  
Mr. and Mrs. Angelo  
Badalamenti  
Mr. and Mrs. Anil Bansal  
Mr. and Mrs. Rocco A. Barbieri  
Coverys  
Eagan Family Foundation, Inc.  
The Fred C. Rummel Foundation  
Mrs. Elizabeth Greene  
The Hyde and Watson Foundation  
Investors Foundation  
Mr. John W. Lohse  
Pompton Queen Diner, Inc.  
Ms. Sinikka Sarro  
Mr. and Mrs. Thomas J. Shara  
Mr. Kenneth B. Stride  
Mr. Joe Wilkins

## **Benefactor**

Mr. and Mrs. Michael Bojcik  
Fairleigh Dickinson University  
Mr. Arthur J. Harrison  
Mr. and Mrs. Harry C. Hicks  
Lenfam Management  
Company - Wendy's  
Mr. and Mrs. James B. Luke

Petillo Incorporated  
PNC Foundation  
True & Associates  
Wayne Public Schools  
Ms. Isobel Wayrick

## **Patron**

Anderson Design Group  
Mr. and Mrs. L. Dean Barnard  
The Hon. and Mrs. John W. Bissell  
Brothers Carpet and Flooring Inc.  
BT Development LLC  
Burroughs-Poole, LLC  
Mr. and Mrs. Donald Chamberlain  
CMU Construction Company Inc.  
Dr. and Mrs. Herbert L. Cole  
Dr. Bharat Dasani  
David Ezra Salon & Spa  
Ms. Deborah Dente  
Dillon Steel Corp.  
Mr. Brian Donnelly and  
Ms. Jamie Berman  
Mr. and Mrs. James J. Doyle  
Dr. and Mrs. Seymour Eisner  
Dr. and Mrs. Barry B. Galton  
Garden State Harley-Davidson  
Mr. Brian Gagnolati  
Grandview Waterproofing Inc.  
Mrs. Lillian Grimbilas  
Dr. and Mrs. Randy Hagen  
Mr. Allen E. Hansen  
Mr. and Mrs. Kenneth Hershman  
Huen Electric New Jersey, Inc.  
Ms. Theresa Jackson  
Mr. Edward J. Jaten  
Mr. and Mrs. Victor Kattak  
Mr. James Klein and  
Ms. Guitty Roustai  
Mr. and Mrs. John A. Koch  
Konica Minolta Medical Imaging  
Mr. and Mrs. Edward Landau  
Dr. and Mrs. Scott Lauter  
Mr. Edward A. Lenczak\*  
Mr. and Mrs. Louis B. Lombardi  
Mr. and Mrs. Andrew Lucchesi  
LVC Interiors Inc.  
Ms. Joy Madlansacay  
Mr. and Mrs. Louis March, Sr.  
Mr. and Mrs. Dennis J. Marion  
Dr. Joseph M. Masessa  
McCloskey Mechanical  
Contractors, Inc.  
Mr. and Mrs. James Messina  
Mr. and Mrs. Harry Neinstedt  
Ms. Margaret Nolan  
Northeast Division  
Reed-Lane  
Mr. Francis J. Reinhardt, Jr.  
Rhino Theatre Group, LLC

Mr. Richard J. Riggi  
Mrs. Clariss B. Rock  
Mr. and Mrs. John F. Rosellini  
Mr. Mario R. Rosellini, Jr.  
Mr. and Mrs. Samuel Schiano  
Mr. and Mrs. Robert Schwartz  
Dr. John P. Scian and  
Dr. Margaret Mary Sacco  
Mr. Glen Schanen  
Mr. Brad Shalit  
Dr. Stuart L. Siepser  
Dr. and Mrs. Arthur L. Suffin  
Dr. and Mrs. Howard Taylor  
Total Pipe Connection, Inc.  
Mr. Dominic Verillo  
Mr. George Wolfson  
Dr. and Mrs. Scott W. Zucker

## *Women's Vision for Health Care Council*

Ms. Paula Bencsko  
Ms. Barbara Bingham-Kalavik  
Ms. Barbara Cook  
Ms. Willa Everson  
Ms. Nadia Goulina  
Ms. Nancy Grimbilas  
Ms. Bonnie Holmes  
Ms. Dawn Johnson  
Ms. Toni Loyas  
Ms. Alma Newton  
Ms. Veronica Sager  
Ms. Janet Shapiro  
Dr. Ritu Sharma  
Ms. Allyssa Tzavlakis  
Ms. Gail Washburn

## **Sponsor**

A & A Fine Foods Inc.  
AAA Contracting Services Corp.  
Ameti's Gourmet Pizza  
Amore of Wayne  
Mr. and Mrs. Douglas Aronson  
Ascape Landscape &  
Construction Corp.  
Aspro Plumbing Inc.  
Avenue Haircutters Inc.  
Mr. and Mrs. Andrew Beloff  
Dr. and Mrs. Stanley F. Bernstein  
Mrs. Carole Blickenderfer  
Mr. and Mrs. Michael Bloom  
Darr Construction  
Equipment Corp.  
Dorfman Abrams Music LLC  
East Coast Fire Protection Corp.  
Frank's Pizza of Oakland, Inc.  
Gary's Wine & Marketplace  
Good Food Cafe  
Grasshopper Too  
High SocieTea House

Hunziker, Jones & Sweeney, PA  
Mr. and Mrs. Wayne Kent  
Mr. Joseph Kozler  
Mr. and Mrs. William Krame  
Mrs. Joan B. Krantz  
Mr. and Mrs. Todd Lauback  
Mr. and Mrs. John Lynch  
Menlo Engineering  
Associates Inc.  
Metro Mechanical Group Inc.  
Moe's Southwest Grill  
Monica's Italian Restaurant  
Partyka Construction Inc.  
Pizza One  
PJH Properties, LLC  
Pompton Lakes Woman's Club  
Positano Restaurant & Pizzeria  
R.J. Runelli & Co. Inc.  
Mr. and Mrs. Paul Reich  
RNL Enterprises LLC  
Mr. and Mrs. Timm W. Robertson  
Mrs. Evelyn J. Schauer  
Dr. Jan Schwarz-Miller and  
Mr. Ben Miller  
ShamRock School of Music  
Spa 23  
Spuntino Wine Bar &  
Italian Tapas  
Sunset Pub & Grill  
Viaggio Ristorante  
West Milford Township  
High School

## **Associate**

2012 Robbinsville Associates, LLC  
Alarm & Suppression Co.  
All Bright Electric  
Amptek Electrical Contractors LLC  
Apex Tile LLC  
Ms. Susan Baniel  
The Boswell Aiosa Group LLC  
Mr. and Mrs. Matthew Curran  
DeSesa Engineering Company Inc.  
Mr. John Duca  
Ms. Emily Fernandez  
Mr. and Mrs.  
Michael G. Giovannielli  
Hillview Home &  
School Association  
K.P. Organization, Inc.  
Mr. and Mrs.  
Russell G. Kleinknecht  
Mr. and Mrs. Paul Marmora  
Maser Consulting, Inc.  
Mr. Bryan Murray  
Mr. and Mrs. James H. Pelrine  
Mr. Curtis Russell  
Ms. Linda Saar  
Sealtite Systems, Inc.



**Associate cont.**

Mr. James H. Smith  
 Ms. Gail Tether  
 Mr. and Mrs. Vincenzo Tripoli  
 Ms. Madalyn Ulino  
 Ms. Louise Van Brunt  
 Wayne Valley High School  
 Mrs. Beverly Wiegand

**Donor**

Mr. William R. Agee  
 Mr. and Mrs. Charles Aiosa  
 Mr. and Mrs. Ronald Aiosa  
 Mr. Robert Arata  
 Arrow Elevator, Inc.  
 Bank of New York Mellon  
 Mr. and Mrs. Emil Baur  
 Boniello's Restaurant  
 Mr. and Mrs. Wayne E. Boyle  
 Mr. Frank Brady  
 Mr. and Mrs. Gaetano Brogna  
 Ms. Dorothy Brown  
 Mr. and Mrs. Mark Casamassina  
 Ms. Patti Castle  
 Mr. and Mrs. Thomas Cavallero  
 Mr. David Chinn  
 Ms. Brenda Coley  
 Consulting Engineers  
 Collaborative Inc.

Mr. and Mrs. Frank Dalton  
 Ms. Cherie Danko  
 Ms. Loretta De Rosso  
 Ms. Amalfi J. Delillo  
 Mr. and Mrs. John DePalma  
 Dr. and Mrs. Valentin N. Dolorico  
 Mrs. Arlette Drillings  
 Ms. Marsha Edelstein  
 Mrs. Margaret Ernst  
 Financial Principles, LLC  
 Mr. Paul G. Forgie  
 Mr. and Mrs. Robert Fox  
 The Hon. and Mrs.  
 Rodney P. Frelinghuysen  
 Mr. Fred Gallo  
 Mr. Douglas S. Gould  
 Green Life Market  
 Mrs. Hilary Greenfield  
 Mr. Paul Guarraia  
 Mr. and Mrs. Reid Hensen  
 High Mountain  
 Presbyterian Church  
 Mr. and Mrs. Edward Kadushin  
 Mr. and Mrs. Lester Kaplan  
 Mr. and Mrs. Alan Karp  
 Mrs. Ida Keil  
 Ms. Anne Marie Kells  
 Mr. and Mrs. Raymond J. Koharian

Mr. and Mrs. Gerald Lash  
 Mr. and Mrs. Robert Lauckner  
 Dr. Barry E. Levant  
 Mr. Irving Levine  
 Ms. Lisa Lombardo  
 Mr. Albert Lurraim  
 Ms. Susan Maglione  
 Dr. and Mrs. Gerald R. Mohl  
 Mr. and Mrs. Alan Nesdill  
 Mr. and Mrs. Joseph Padalino  
 Mr. Ronald Paige  
 Mr. and Mrs. Andrew Pattap  
 PBA Engineering, P.C.  
 Ms. Evelyn Proffit  
 Mr. and Mrs. John H. Prol  
 Ms. Margaret Puccio  
 Mr. Federic A. Quintieri  
 Mr. Thomas J. Randazzo  
 Mr. Harold Richardson  
 Mr. and Mrs. Robert Rinaldo  
 River of Beer  
 Mr. and Mrs. John Romeo  
 Mrs. Mary Lou Rosato  
 Ms. Karen Schmutz  
 Mr. and Mrs. Karl Schoenknecht  
 Ms. Barbara I. Schofield  
 Mr. and Mrs.  
 John M. Schweighardt

Mr. Dieter Segeth  
 Ms. Lila Shabman  
 Mr. and Mrs. Frederick H. Sharpell  
 Mr. and Mrs. Robert W. Sherger  
 Mrs. Judith Silverstein  
 Mrs. Elizabeth Smerak  
 Spectrum Painting &  
 Paper Hanging, LLC  
 Mrs. Ruth E. Spellman  
 Stein Industries Inc.  
 Mr. and Mrs. Gary L. Stromberg  
 Studio 5 Partnership  
 T-Bowl II  
 Thatcher McGhee's  
 Ms. Catherine Tschischik  
 Uptown Electric, Inc.  
 Mr. and Mrs. Stephen Vallone  
 Mrs. Bernice Van Zile  
 Mr. and Mrs. Edward M. Vannelli  
 Mr. Alan R. Verduin  
 VIP Construction Services, Inc.  
 Ms. Barbara Wheeler  
 Mr. Lester Wolfson  
 Mr. and Mrs. Ronald Yutko  
 Mr. Joseph Zambardi

*\*Deceased***Planned Giving Donors**

---

Mrs. Kathe Arzdorf\*  
 Mr. George F. Eckhardt, Jr.\*

Ms. Lois L. Hargreaves\*  
 Mr. Donald A. Hubner\*

Ms. Carol A. Rafferty\*  
 Ms. Janet S. Shapiro

*\*Deceased***Memorial Gifts**

---

**Mary Ellen Afflitto**

Cronin, Hanley &  
 VanZile, LLC

**Evelyn F. Atieh**

Ms. Janet Amore

**Barbara Barhorst**

Mr. and Mrs. Cosmo Fantozzi

**Christine Barkenbush**

Mr. and Mrs. Oakley C. Blake

**Virginia Blickenderfer**

Mrs. Carole Blickenderfer

**Madelynn Canger**

Mr. and Mrs. Oakley C. Blake

**Stephen P. Charman**

Ms. Verna A. Charman

**Thomas Chimileski**

Mr. and Mrs. Robert R. Roszko

**Leona Chodosh**

Dr. and Mrs. Barry B. Galton

**Dr. Hermogenes Ciocon**

Mr. and Mrs. Andrew Boral  
 Ms. Maria Valderrama

**Maureen Connolly**

Mr. and Mrs. Oakley C. Blake

**Tania Cutone's Father**

Ms. Janet Amore

**Tunis DeHeer**

Ms. Janet Amore

**Thomas Detrick**

Mr. and Mrs. Tom Rizzo

**Barbara Devaney**

Ms. Christine Goldthwaite

**Werner Diebold**

Mr. and Mrs. Oakley C. Blake

**John Gabriel**

Mr. and Mrs. Charles P. Losen

**Keith Geffinger**

Ms. Janet Amore

**John and Ann Greco**

Ms. Anne Voehringer

**Eugene Homentowski**

Mr. and Mrs. William O'Neill

**Donald A. Hubner**

Ms. Lucy Babcock

Mr. and Mrs. John Carrico

Mr. Gene Coyle

Mr. and Mrs. Bruce C. Dolin

Mrs. Elizabeth Greene

Mr. C.E. Hubner Jr.

Lakeland Bank

Mr. Bob McEwan

Mr. and Mrs. Paul Monaco

Mrs. Geneva Marie Ricci

Ms. Ann K. Russell

Ms. Ruth Skudera

Ms. Stephanie Toettcher

Mr. and Mrs.

Irwin Underweiser

Mrs. Diane Ward

**Sienna L. Maloney**

Ms. Laurie Bush

**Walter A. Markley**

Mr. and Mrs. John Gagliardo

Dr. Daniel Markley and

Dr. Katherine Fox

Mrs. Diane G. Markley

Ms. Marie Strumolo

**Rita Montford**

Mr. and Mrs. Oakley C. Blake

**Russell Pagana**

Ms. Lynn Garofalo

**Frank Pron, Sr.**

Ms. Sibel Odaman

**Mary Risco**

Ms. Jacqueline Vozzo

**Robert Rizzi**

The Beloff Family

The Santulli Family

**Naty Sanchez**

Dr. and Mrs. Valentin N. Dolorico

**Michael Schurig**

Mr. and Mrs. Oakley C. Blake

Mr. and Mrs. Paul J. Dunn

**Ms. Marilyn L. Shadek**

Marian Craig Leers

Charitable Trust

**Dr. Jerold Silodor**

Mrs. Joan B. Krantz

**Barbara Stiehler**

Ms. Janet Leblond

Mr. and Mrs. Joseph Lopez

North 13th Street Tech

Mr. and Mrs. James Soojian

**Timothy Strand**

Ms. Iola Strand

**Russell Teel**

Mr. and Mrs. Jeffrey Peskin

William Paterson University

Foundation

**Felix Zepf**

Mr. and Mrs. Charles P. Losen

## Honor Gifts

---

### **Coree Betron**

Mr. and Mrs. Craig Betron

### **Margaret, Carina and Sasha Bojcik**

Mr. and Mrs. Michael Bojcik

### **Dr. Andrew T. Dellapi**

Ms. Joy Madlansacay

### **Hank and Marie Driesse's 50th Wedding Anniversary**

Ms. Mae Breeman

### **George Estrella**

Mrs. Pamela Walters

### **Shelley Gagliardi**

Mrs. Pamela Walters

### **Dayse Kowalski**

Mr. and Mrs. John A. Koch

### **Dr. Waldemar Silva**

Mr. Robert L. Glanville

### **Maryann Taragono's Daughter's Wedding**

Dr. and Mrs. Robert P. Gordon

## Doctors' Day Donors

---

### **All Chilton Doctors**

Mr. Daniel Dondiego, Jr.  
Ms. Gloria Eustice  
Mrs. Elizabeth Greene  
Mrs. Doris Hiller  
Mr. and Mrs. Michael Kelly  
Mr. Mohamad Nahez  
Mr. John Simon  
Mr. and Mrs. Josef Smusz  
Mr. and Mrs. Ralph J. Tarsitano

### **Dr. Fuad Ahmad**

Ms. Joan A. Sorgi

### **Dr. Pat F. Audia**

Ms. Jeanne Elia  
Ms. Pamela Rizzo  
Mr. and Mrs. Robert Wyble

### **Dr. Michelle Azu**

Dr. Kathleen Kelleher  
Ms. Fay R. Prince

### **Dr. Frank X. Bain**

Mr. and Mrs. Robert W. Barkovitz

### **Dr. Ebube Bakosi**

Ms. Pamela Rizzo

### **Dr. Andrew Bernstein**

Ms. Kathryn J. Good  
Mr. and Mrs. Richard Jennings  
Mr. and Mrs. Arthur W. Mulder  
Ms. Fay R. Prince  
Mr. and Mrs. Steven Sabatino

### **Dr. Stanley F. Bernstein**

Ms. Joan Lutman Carpenter  
Mr. and Mrs. Herbert Gellings

### **Dr. Lawrence Blitz**

Ms. Geraldine Conzentino  
Mr. and Mrs. Frank R. Jaron  
Ms. Diane R. Kimmey  
Mr. Fred Lardieri  
Ms. Filomena Marino  
Ms. Angela Weil

### **Dr. Timothy Brabston**

Mrs. Carole Blickenderfer  
Mr. Herbert G. Gaiss  
Ms. Joan L. Larsen

### **Dr. Zhanna Branovan**

Mrs. Willa Everson  
Ms. Josephine MacDonald  
Mrs. Jannine Uhl

### **Dr. Mario R. Capio**

Ms. Theresa Bushman  
Ms. Gloria Cloughsey  
Mr. and Mrs. Odd Kristiansen  
Mr. and Mrs. Salvatore La Corte  
Mr. Robert Nilson  
Mr. and Mrs. Samuel Schiano

### **Dr. Joseph Cappadona**

Ms. Helen M. Verbeke

### **Dr. Charbel Chalfoun**

Mrs. Fay R. Prince  
Dr. Eliot H. Chodosh  
Ms. Lois Cornell  
Mr. and Mrs. Wayne Gillikin  
Mr. and Mrs. Frederick Muller  
Mrs. Beverly Wiegand

### **Dr. Martin J. Corso**

Mr. and Mrs. Fred DeMauro

### **Dr. Michael R. Dara**

Mr. Lawrence Bier  
Mr. and Mrs. Louis B. Lombardi

### **Dr. Dharendra N. Das**

Mrs. Beverly Wiegand

### **Dr. Steven Domnitz**

Ms. Viola D. Harris  
Mr. and Mrs.  
Kenneth Hershman

### **Dr. Gary J. Drillings**

Ms. Susan Becker  
Ms. Lynn Scornavacca

### **Dr. Ayman E. Eraiba**

Mrs. Carole Blickenderfer

### **Dr. Reza Farhangfar**

Mr. and Mrs. Ramiro  
E. Bahamonde  
Ms. Jane Bishop  
Mr. Rish Borks  
Mr. and Mrs.  
Donald Chamberlain

### **Dr. Lynda Farrell**

Mr. and Mrs. Harold J. Berthold

### **Lorelei Fen, APN**

Ms. Linda Saar

### **Dr. Martin J. Frank**

Ms. Patricia A. Boatner

### **Dr. Barry Galton**

Mr. James Marotta

### **Dr. Larisa Gershman**

Mrs. Gioia Graham  
Ms. Martine Jaffe  
Ms. Sinikka Sarro

### **Dr. David A. Gold**

Mr. Michael Jefferson

### **Dr. Cory A. Golloub**

Mr. James H. Smith

### **Dr. George A. Guariglia**

Mr. and Mrs. Emanuel Reiser  
Mr. and Mrs. William J. Vivino  
Mr. and Mrs. Steve Yourman

### **Dr. Elizabeth Hawruk**

Mr. and Mrs. Richard Armani

### **Dr. Preston Hupart**

Mr. Henry Buchanan  
Mrs. Gioia Graham

### **Dr. Mazen Itani**

Mr. Joseph Laurita

### **Dr. Hedoneia C. Jaaj**

Ms. Terry A. Beek  
Mr. and Mrs. Gerald Cannata

### **Dr. Jyothi Jagadeesh**

Ms. Loretta Vitale

### **Dr. Robert Kayal**

Mr. and Mrs. Jose Lo Greco

### **Dr. Frank Kielar**

Mr. and Mrs. Richard Armani

### **Dr. Abraham Knoll**

Ms. Shirley Smith

### **Dr. Barry E. Levant**

Ms. Joanne Foster

### **Dr. Jonathan Levine**

Mr. and Mrs. Andrew Leenas

### **Dr. Kenneth P. Lubansky**

Mr. and Mrs. Charles Tucker

### **Dr. Deanna Macek**

Mrs. Beverly Wiegand

### **Dr. Issam Mallouhi**

Mr. and Mrs.  
Christopher Bernhardt

### **Dr. Venkata Marella**

Mr. Charles G. Timm

### **Dr. Annmarie M. Mascellino**

Mr. and Mrs. Bradley Gibbons  
Ms. Anne Kelly

### **Dr. Joshua Nochumson**

Mr. and Mrs.  
Gregory E. Stockinger

### **Dr. Joshua Nochumson**

Ms. Mildred Ambrogio  
Mrs. Beverly Wiegand

### **Dr. Chika Obidike**

Mrs. Kathleen Blumers

### **Dr. Timothy O'Donnell**

Mrs. Loretta Clifford  
Mr. and Mrs. Thomas Graf  
Mr. and Mrs. Robert A. Mayor  
Mr. and Mrs. Harold Miller  
Mr. and Mrs. Robert Mohl  
Mr. and Mrs. Henry J. Okken

### **Dr. Dhinoj Parikh**

Mrs. Hannah Brothers  
Mr. and Mrs. Gregory J. Levitsky  
Mrs. Bernadette Nolan  
Mr. and Mrs. Michael O'Brien

### **Dr. Godfrey Pinder**

Mr. Gene Trappe  
Mrs. Beverly Wiegand

### **Dr. Robert Platt**

Ms. Donna Mason

### **Dr. Ernest J. Pope**

Ms. Karen Pennington

### **Dr. Steven Potter**

Mr. and Mrs. John R. Miller

### **Dr. Liviu Rappaport**

Mr. and Mrs. David G. Rayner  
Mr. and Mrs. Joseph Silva

### **Dr. Oscar Reicher**

Mr. and Mrs. Louis B. Lombardi

### **Dr. Mark S. Rosenthal**

Mrs. Catherine Broglie  
Ms. Lynn Scornavacca

### **Dr. Allen Shalit**

Mrs. Corinne Ball

### **Dr. Hervey Sicherman**

Mrs. Willa Everson

### **Dr. Waldemar Silva**

Mr. Robert L. Glanville  
Mr. Douglas S. Gould

### **Dr. Tracy A. Smith-DiPalo**

Mrs. Inga M. Cueman  
Ms. Bonnie Piaget

### **Dr. Lisa Stevens**

Mrs. Willa Everson  
Mr. and Mrs. Roger Simpson

### **Dr. Jonathan Stillman**

Mr. and Mrs. Alan Van Splinter

### **Dr. Abhay K. Suda**

Mr. Thomas Brokke

### **Dr. Arthur L. Suffin**

Mr. and Mrs. Garry Luciani

### **Dr. David C. Sundstrom**

Ms. Marsha Borkowski  
Mr. and Mrs. Anthony Scerbo

### **Dr. Andrew Topf**

Ms. Susan Becker

### **Dr. Robert A. Wagner**

Mr. and Mrs. Salvatore La Corte

### **Dr. Marcus L. Williams**

Ms. Beverly Caccavale

### **Dr. Joseph Zangara**

Mr. and Mrs. Richard Armani

## Special Event Sponsors

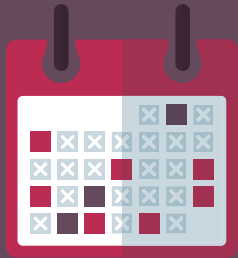
---

Advanced ICU Care	Mr. Gordon Embley	Dr. and Mrs. David Maizel	Scian & Scian OB/GYN Associates
Advanced Orthopaedic Associates	Emerald Garden Design	Mr. Samuel Maizel	Sella's Paint & Wallpaper Co.
Allied Beverage	Engo Co.	Mr. and Mrs. Leonard Marcus	Mr. Brad Shalit
Applebee's	Environmental Climate Control	MassMutual	The Shannon Rose
AtHome Medical and Atlantic Private Care Services	EVS Metal	Mr. and Mrs. Ron Maxman	Sheridan Healthcorp, Inc.
Atlantic Ambulance Corp.	Fedway Associates, Inc.	Medline Industries, Inc.	ShopRite of Lincoln Park
Atlantic Health System	Francis Cauffman	Merrill Lynch	ShopRite Liquors of Lincoln Park
Atrium Health & Senior Living	Fredericks Fuel	Mr. and Mrs. James Messina	ShopRite Liquors of Roxbury
Automatic Suppression & Alarm Systems, Inc.	The Hon. and Mrs. Rodney P. Frelinghuysen	Modern Electric Co.	Shotmeyer Bros. Heating & Air Conditioning
Mr. and Mrs. Norman Axelrod	The French's Food Company	Montclair Radiology	Mr. Charles Shulman
Mr. Louis Baduini	Dr. Kenneth Garrett	Navin, Haffty & Associates, LLC	Simone International
Mr. and Mrs. Stuart Balter	Geiger	Mr. and Mrs. Harry Neinstedt	Smallwood Wealth Management
Mr. and Mrs. Rocco Barbieri	Mr. and Mrs. Jeffrey Gillman	New Jersey Council for Economic Education	Mr. James H. Smith
Mr. Milton Baum	Mr. Irving Glass	New Jersey Hospital Association (NJHA)	Snelling Staffing
The Hon. and Mrs. John W. Bissell	The Greenstein Family	NJM Insurance Group	The Solomon Organization
Boiling Springs Savings Bank	Hallock & Cammarota, LLP	NJOI and Dr. Vincent McInerney	Sordoni Construction Company
BreakThru Beverage	Mr. and Mrs. Kenneth Hershman	North Jersey Federal Credit Union	Spuntino Wine Bar
Buckl Architects	High Grade Beverage	North Jersey Neurologic Associates, P.A.	Mr. Donald Szibdat
Calandra's	Mr. and Mrs. Dann Hordyszynski	Nurminen Construction	Tabb, Inc.
Mr. and Mrs. Ira Cantor	Hospital Central Services	Oakland Rehabilitation and Healthcare Center	TeamHealth
Care One	Imperial Bag & Paper Co., LLC	Opici Family Distributing	Thumann's, Inc.
Carmagnola & Ritardi, Attorneys at Law	Inserra Supermarkets, Inc.	Partner Construction Services Corp	Tilcon New York Inc.
CBA Industries, Inc.	Investors Bank	PediatriCare Associates	Mr. John Tumminia
Cedar Crest Village	Jackson Lewis, P.C.	Peerless Beverage	Van Duyne, Bruno & Co., P.A.
Mr. and Mrs. Donald Chamberlain	Jaclyn, Inc.	Perlmutter Family ShopRites	The Venetian Catering
Chelbus Cleaning Company, Inc.	Mr. and Mrs. Howard Jacobs	Piekarsky Orthodontics	The Vista, A Christian Health Care Center Community
Chevys	JDT Resorts/Villa Health and Wellness	Mr. and Mrs. Frank Pisarcik	Mr. and Mrs. Robert Walton
Chilton Medical Center	Johnson & Johnson	EB and Nancy Plumeri	The Wanaque Center & The Health Center at Bloomingdale, Continuum Healthcare
Chilton Medical Center Cardiology Department	Joseph M. Sanzari, Inc.	PNC Wealth Management	Warren Distributing Co.
Chilton Medical Center Foundation Board of Trustees	Mr. and Mrs. Andrew Kanter	Preakness Hills Country Club	Wayne Motors, Inc.
Chilton Medical & Dental Staff	Mr. and Mrs. Robert Kantor	Precise Plumbing Inc.	Ms. Isobel Wayrick
Christian Health Care Center	KEIL Heating and Air Conditioning	Proximo Spirits	West Parkway Ambulatory Surgery Center, L.L.C.
Colavito & Associates, LLC	Kobrand Fine Wine & Spirits	Prudential	William H. Connolly & Co., LLC
Columbia Bank	Kohler Distributing Co.	Regency Gardens Nursing and Rehabilitation Center	William Paterson University Foundation
Cross Country Staffing	Mr. David Korn	Reproductive Medicine Associates of New Jersey	WithumSmith+Brown
Mr. and Mrs. Mark David	Mr. and Mrs. Arthur Kramer	RoNetco Supermarkets Inc.	W.J. Malone Associates Inc.
Delta Contracting Services, Inc.	Lakeland Bank	Mr. and Mrs. Mark S. Rosen	Mr. Lester Wolfson
Dewberry	Lakeland Health Care Center	Mr. and Mrs. Richard Rosenblum	Woodside Design Group
Diabetes Research Institute Foundation	Legg Mason Global Asset Management	Royal Wine	Wyndham Worldwide
DiCarolis Associates, Inc.	Dr. Jerome Levine	Same Day Delivery Service	Mr. and Mrs. Morris Yamner
Eastern Propane	Mr. and Mrs. Harold Levison	The Saul Rosen Foundation	Yankee Linen, Inc.
Eckroth Planning Group, Inc.	Dr. David E. Lipson	SCC Soft Computer Consultants	
EdAssist	Llanfair House Care & Rehabilitation Center	Schumacher Chevrolet Auto Group	
	Mr. and Mrs. Louis B. Lombardi		

## Matching Gifts Companies

---

AT&T Community Giving Campaign	Jackson Lewis P.C.	Kate Spade & Company Foundation	State Farm Companies Foundation
Crestmont Toyota-Volkswagen	Johnson & Johnson	PSEG Power of Giving	Truist
IBM Corporation	PNC Foundation		



## Save the Date!

Please mark your calendars and join us for these 2017 Chilton Medical Center Foundation events.

Chilton Medical Center Foundation



### Chilton Wine Event

Friday, April 28, 2017  
Preakness Hills Country Club  
Wayne, NJ



### Golf Classic

Monday, June 19, 2017  
Preakness Hills Country Club  
Wayne, NJ



### Chilton Gala

Saturday, October 28, 2017  
The Venetian  
Garfield, NJ