




Morristown Medical Center
Overlook Medical Center
Newton Medical Center
Chilton Medical Center
Hackettstown Medical Center
Goryeb Children's Hospital
Atlantic Rehabilitation

Pulse Secure VPN (formerly Juniper VPN) for Windows

This document provides information about how to configure Pulse Secure for accessing AHS Resources.

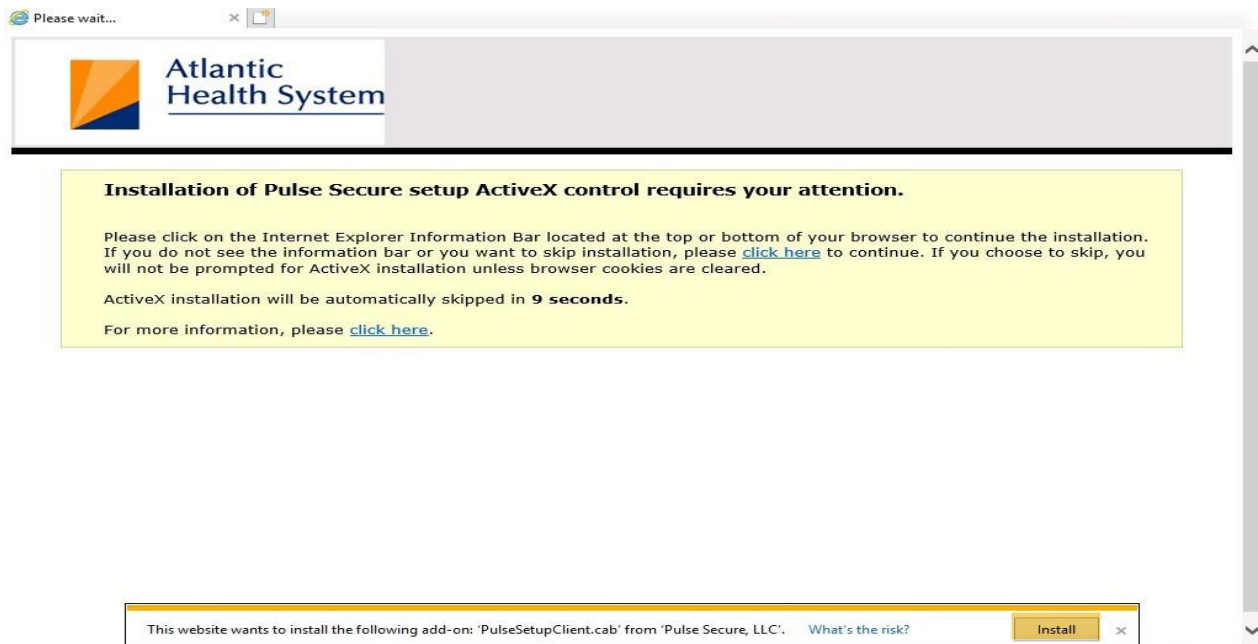
Enrollment to MFA is only required to be done once. You can now access Pulse Secure with Multi Factor Authentication (MFA) from a computer that is not within the AHS network:

For Instructions on MFA Setup [Click Here](#).

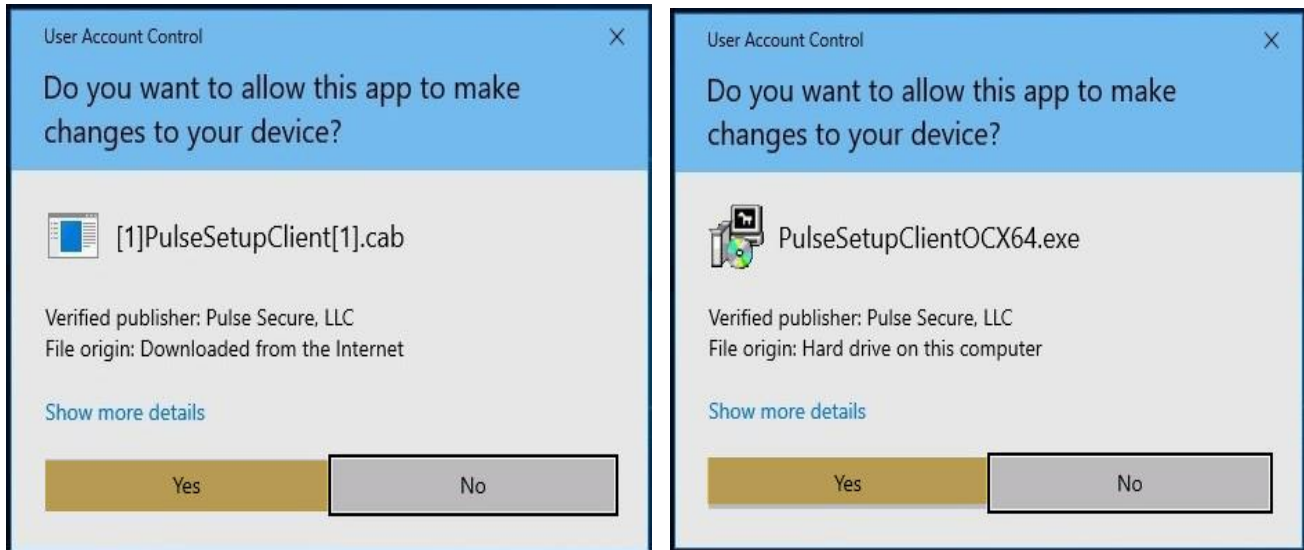
1. Open Internet Explorer  (Windows)
2. Go to the URL: <https://remote.atlantichealth.org/employeee> enter your (AHS Domain) User Name and Password then click "Sign in".

****Base on MFA (Multi-Factor Authentication) configuration you will either get a "Notification" via the App or a "Phone call" from 973-973-0000***

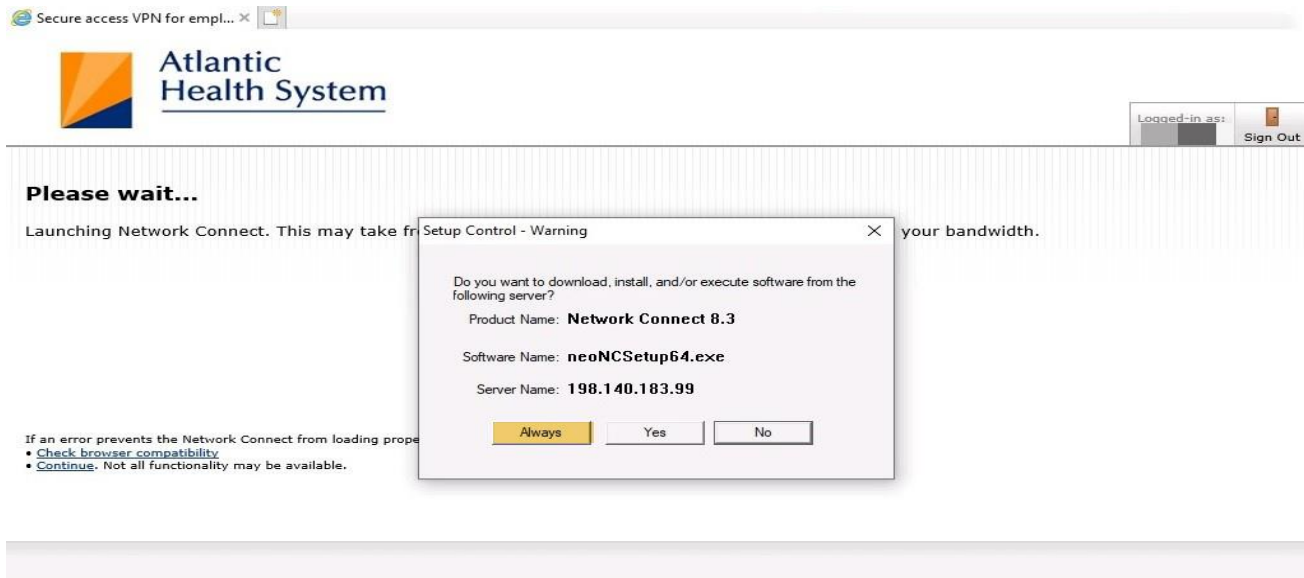
3. On the next page click "**Install**" at the bottom of the page for the Active X as highlighted below.



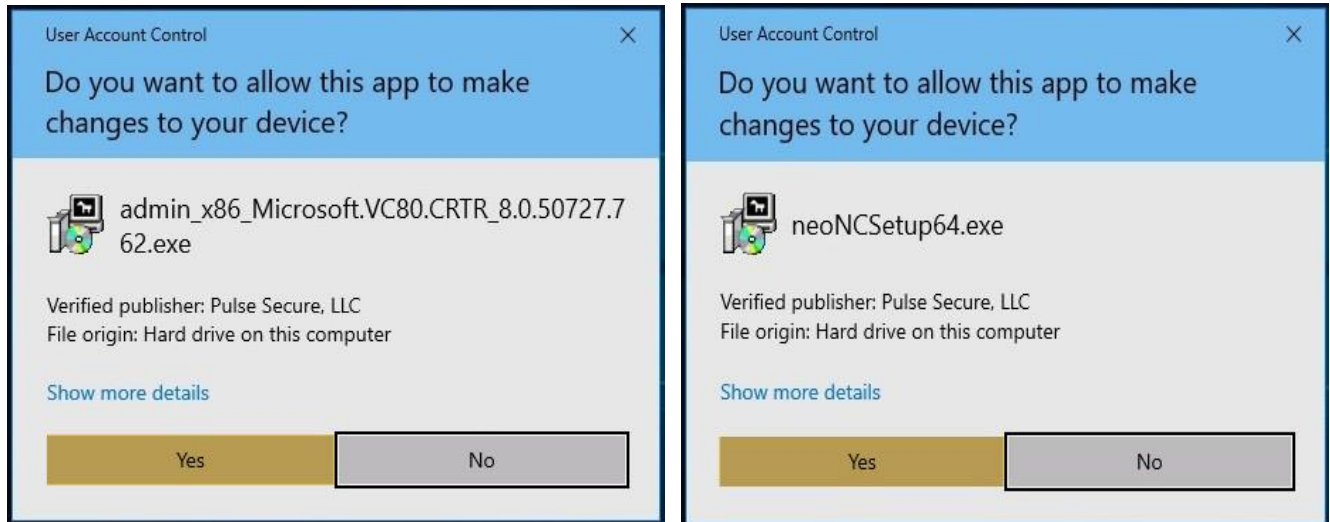
- Once install is clicked from the previous step a set of prompts will follow please click **"Yes"** as highlighted below.



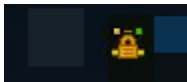
- Then click **"Always"** on the **Setup Control -Warning** prompt as highlighted below.



6. On the next couple prompts click "Yes" as highlighted below.



7. Once completed you should be connected to AHS VPN with an icon located in Toolbars as shown below.



Note: If you experience any issue with the above setup, please contact CSC at [973-971-7272](tel:973-971-7272).